

Prices mobilehomes

Private renters ERSOL on KON TIKI, St. Tropez – Ramatuelle 2017

Privat / 2017 ERSOL	Kat. A Preis/ Tag	Kat. B Preis/ Tag	Kat. A Preis/ Woche	Kat. B Preis/ Woche
09.04. – 06.05.2017	75	85	500	600
07.05. – 27.05.2017	85	100	600	700
28.05. – 17.06.2017	100	115	700	800
18.06. – 22.07.2017	185	200	1300	1400
23.07. – 19.08.2017	215	230	1500	1600
20.08. – 09.09.2017	175	185	1200	1300
10.09. – 01.11.2017	75	85	500	600

These mobile homes are as well directly on the holiday village Kon Tiki in Ramatuelle. They are very good/nice and in good state. These mobile homes are located directly on the Village KON TIKI in Ramatuelle and are offered by private companies.

The mobile homes are individually decorated to the taste of the owner - none is the same, let us surprise you! Often the mobile homes vary in age.

The models of the Category A are a little older and not as well equipped as the models of class B.

Most mobile homes are located in the centre of Kon Tiki, max. 200 - 250m from the beach. Some models are located at the top of the village (about 500 meters from the beach)!

Categories

Category A (4 - 6 Persons):

25m² - 30m², 2 bedrooms. 1 bed room with double bed + 1 bed rooms with 2 single beds + 1 convertible double bed. Fully equipped kitchen with 4 gas rings + fridge. Hot + cold water, Bathroom with shower and toilet. Fully equipped terrace with garden chairs, tables and parasol.

Category B (Max 6 Persons):

33m² - 35m², 3 rooms. 1 bed room with double bed + 2 bed rooms with 2 single beds. Fully equipped kitchen with 4 gas rings + fridge. Hot + cold water, Bathroom with shower and toilet. Fully equipped terrace with garden chairs, tables and parasol.

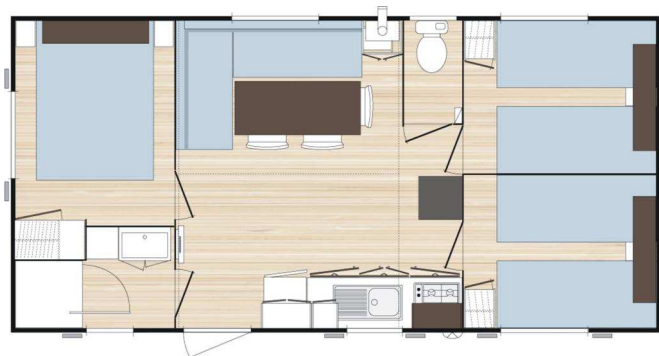
Please mail your reservation with the included reservation form.



Category A:



Category B:



Drawings are not contractual. Just so they can get a rough idea.

GENERAL CONDITIONS

The mobilehomes are available from saturday to saturday. In low season other arrival and departure days can be chosen.

Accommodation for 1 to up 6 adults plus 2 children maximum.

A deposit of 200.-€/ Mobile-Home in cash, is asked on arrival by the company ERSOL (for breakages, reimbursed on departure).

Blankets/sleeping bags and towels are not provided.

Mobilehomes must be left in a clean state – if the accommodation is not left tidy a cleaner will be provided for 60.-€/ mobilehome. You can also book an end cleaning separately.

Descriptions and/or photographs are given as an indication! They are not contractual!

Local holiday tax, gas, electricity and 1 parking are included.

From 2016: Local holiday tax: 0,66 € / day / person from 18 years (for mobilehomes & places) and has to be transferred with the accommodation costs.

Pets must be declared.

There is a supplement charge of 10 €/ day/animal.

Exotic animals must be checked for permission. Animals are not allowed onto the beach.

A deposit of 50%, must be paid on reservation. 4 weeks before arrival the 2nd 50% are to pay.

Payments can be made by:

By money transfer to the following account in Germany:

EUROPEAN DIVING SCHOOL, Account number: 1414097, BLZ 600 501 01,
IBAN DE93 6005 0101 0001 4140 97, BIC-Code: SOLADEST.

To reserve use the attached reservation form.

Please email/fax/send us the copy of your reservation payment receipt.

If not we cannot confirm your reservation.

We would be very happy if you would choose our dive club and holiday camp for your holidays. We promise you fantastic dives and make everything to make your holidays as good as possible.

Alex and the team of the European Diving School.