

**Prices mobile homes, private company IVENT,  
on Kon Tiki, St. Tropez – Ramatuelle 2017**

<b>Private renter 2017</b>	<b>Cat. A Price/ Day</b>	<b>Cat. B Price/ Day</b>
23.04. – 06.05.2017	80	90
06.05. – 27.05.2017	90	110
27.05. – 17.06.2017	110	120
17.06. – 22.07.2017	190	210
22.07. – 19.08.2017	220	240
19.08. – 02.09.2017	180	190
02.09. – 09.09.2017	110	120
09.09. – 16.09.2017	80	90
16.09. – 30.09.2017	70	80
30.09. – 01.11.2017	80	90

<b>Cat. A Price/ Week</b>	<b>Cat. B Price/ Week</b>
490	590
590	690
690	790
1200	1300
1400	1500
1190	1290
690	790
590	690
490	590
420	520

Diese Mobilheime befinden sich direkt auf dem Feriendorf KON TIKI und werden von Privatvermietern angeboten

These mobile homes are as well directly on the holiday village Kon Tiki in Ramatuelle. They are very good/nice and in good state. These mobile homes are located directly on the Village KON TIKI in Ramatuelle and are offered by private companies.

The mobile homes are individually decorated to the taste of the owner - none is the same, let us surprise you! Often the mobile homes vary in age.

The models of the Category A are a little older and not as well equipped as the models of class B.

Most mobile homes are located in the centre of Kon Tiki, max. 200 - 250m from the beach. Some models are located at the top of the village (about 500 meters from the beach)!

### **Categories**

**Category A:**

Ca. 24m<sup>2</sup>, 2 rooms. 1 bed room with double bed + 1 bed rooms with 2 single beds + 1 convertible double bed. Fully equipped kitchen with 4 gas rings + fridge. Hot + cold water,

Bathroom with shower and toilet. Fully equipped terrace with garden chairs, tables and parasol. |

In all mobiles are enough dishes, pots, cutlery, microwave, coffee maker, etc. available. In some models is a dishwasher or a washing machine.

**Category B:**

Ca. 30m<sup>2</sup>, 3 rooms. 1 bed room with double bed + 2 bed rooms with 2 single beds + 1 convertible double bed. Fully equipped kitchen with 4 gas rings + fridge. Hot + cold water, Bathroom with shower and toilet. Fully equipped terrace with garden chairs, tables and parasol. |

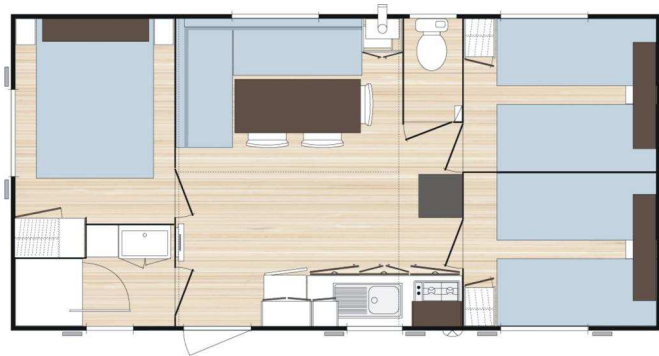
**Please mail your reservation with the included reservation form.  
Drawings are not contractual. Just so they can get a rough idea.**



**Category A:**



**Category B:**



### **General CONDITIONS**

The mobiles are available from Saturday to Saturday. In low season other arrival and departure days can be chosen.

Accommodation for 1 up to 6 adults plus 2 children maximum.

A deposit of 200.-€/ Mobile-Home in cash, is asked on arrival by the company ERSOL (for breakages, reimbursed on departure).

Blankets/sleeping bags and towels are not provided.

Mobilehomes must be left in a clean state – if the accommodation is not left tidy a cleaner will be provided for 60.-€/ mobilehome. You can also book an end cleaning separately.

Descriptions and/or photographs are given as an indication! They are not contractual!

Gas, electricity and 1 parking are included.

From 2016: Local holiday tax: 0,66 € / day / person from 18 years (for mobilehomes & places) and has to be transferred with the accommodation costs.

Pets must be declared.

There is a supplement charge of 10 €/ day/animal.

Exotic animals must be checked for permission. Animals are not allowed on the beach.

A deposit of 50%, must be paid on reservation. 4 weeks before arrival the 2nd 50% are to pay.

Payments can be made by:

By money transfer to the following account in Germany:

EUROPEAN DIVING SCHOOL, Account number: 1414097, Blz 600 501 01,  
IBAN DE93 6005 0101 0001 4140 97, BIC-Code: SOLADEST.

To reserve use the attached reservation form.

Please email/fax/send us the copy of your reservation payment receipt.

If not we cannot confirm your reservation.

**We would be very happy if you would choose our dive club and holiday camp for your holidays. We promise you fantastic dives and make everything to make your holidays as good as possible.**

**Alex and the team of the European Diving School.**